

TRIPLE DOUBLE DA VINCI DIAMONDS

BONUS

FREE GAMES BONUS INITIATION

During the base game, 3



appearing in any position on reels 1, 2, and 3 starts

the Free Games Bonus.

10 free games are awarded.



is a scatter symbol.



appears only on reels 1, 2, and 3.

BONUS : **PAY TABLES**



- 15 - 10000
- 14 - 7500
- 13 - 5000
- 12 - 3000
- 11 - 2000
- 10 - 1200
- 9 - 800
- 8 - 400
- 7 - 200
- 6 - 100
- 5 - 50
- 4 - 25
- 3 - 15



substitutes for 2



symbols.



substitutes for 3



symbols.



and



appear only when unlocked by the Spin-crease feature.



- 15 - 7500
- 14 - 5000
- 13 - 3000
- 12 - 2000
- 11 - 1200
- 10 - 750
- 9 - 500
- 8 - 250
- 7 - 120
- 6 - 60
- 5 - 30
- 4 - 20
- 3 - 10



substitutes for 2



symbols.



substitutes for 3



symbols.



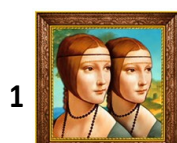
and



appear only when unlocked by the Spin-crease feature.



- 15 - 6000
- 14 - 4000
- 13 - 2400
- 12 - 1600
- 11 - 1000
- 10 - 600
- 9 - 400
- 8 - 200
- 7 - 100
- 6 - 50
- 5 - 25
- 4 - 15
- 3 - 10



substitutes for 2



symbols.



substitutes for 3



symbols.



and



appear only when unlocked by the Spin-crease feature.



5 - 200
4 - 40
3 - 8



5 - 150
4 - 20
3 - 5



5 - 125
4 - 15
3 - 5



5 - 100
4 - 15
3 - 5



5 - 100
4 - 15
3 - 5

ALL CREDIT WINS ARE SHOWN WITHOUT ANY BET MODIFIERS.

BONUS : **WILD**



is wild and substitutes for all symbols.



1

substitutes for 3



symbols.



1

substitutes for 1



symbol.



appears only on reels 2, 3, and 4.

BONUS : FREE GAMES BONUS RULES

The Free Games Bonus uses different reels.

Free games automatically play on the same lines at the same bet per line as the game that initiated the Free Games Bonus.

The Free Games Bonus does not award additional free games.

The Free Games Bonus ends when 0 free games remain.

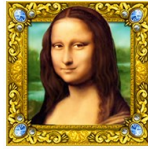
BONUS : TUMBLING REELS FEATURE

All symbols in winning combinations disappear.

The empty symbol positions are filled as symbols tumble from above. Afterwards, symbols are re-evaluated for new winning combinations.

Reels continue to tumble until no winning symbol combinations are created as a result of the tumbling reels.

BASE PAY TABLES



- 15 - 10000
- 14 - 7500
- 13 - 5000
- 12 - 3000
- 11 - 2000
- 10 - 1200
- 9 - 800
- 8 - 400
- 7 - 200
- 6 - 100
- 5 - 50
- 4 - 25
- 3 - 15



substitutes for 2



symbols.



substitutes for 3



symbols.



and



appear only when unlocked by the Spin-crease feature.



- 15 - 7500
- 14 - 5000
- 13 - 3000
- 12 - 2000
- 11 - 1200
- 10 - 750
- 9 - 500
- 8 - 250
- 7 - 120
- 6 - 60
- 5 - 30
- 4 - 20
- 3 - 10



and



appear only when unlocked by the Spin-crease feature.



- 15 - 6000
- 14 - 4000
- 13 - 2400
- 12 - 1600
- 11 - 1000
- 10 - 600
- 9 - 400
- 8 - 200
- 7 - 100
- 6 - 50
- 5 - 25
- 4 - 15
- 3 - 10



substitutes for 2



symbols.



substitutes for 3



symbols.



and



appear only when unlocked by the Spin-crease feature.



5 - 200
4 - 40
3 - 8



5 - 150
4 - 20
3 - 5



5 - 125
4 - 15
3 - 5



5 - 100
4 - 15
3 - 5



5 - 100
4 - 15
3 - 5

ALL CREDIT WINS ARE SHOWN WITHOUT ANY BET MODIFIERS.

BASE : **WILD**



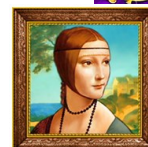
is wild and substitutes for all symbol except



1



substitutes for 3



symbols.

1



substitutes for 1



symbol.



appears only on reels 2, 3, and 4.

BASE : SPIN-CREASE FEATURE

The Spin-crease feature improves the game as the total amount bet increases.

The total amount bet on this game is counted across all sessions played on the current user account.

As the total amount bet increases, the following symbols will be unlocked and appear on the reels in order:



– Bet 5000 credits to unlock.



– Bet an additional 10000 credits to unlock.



– Bet an additional 35000 credits to unlock.



– Bet an additional 150000 credits to unlock.



– Bet an additional 800000 credits to unlock.



– Bet an additional 4000000 credits to unlock.

When the final symbol is unlocked, the meter will display 100% and remain visible



The rate of the Spin-crease progress is automatically adjusted based on the exchange rate of the currency in play.

BASE : **TUMBLING REELS FEATURE**

All symbols in winning combinations disappear.

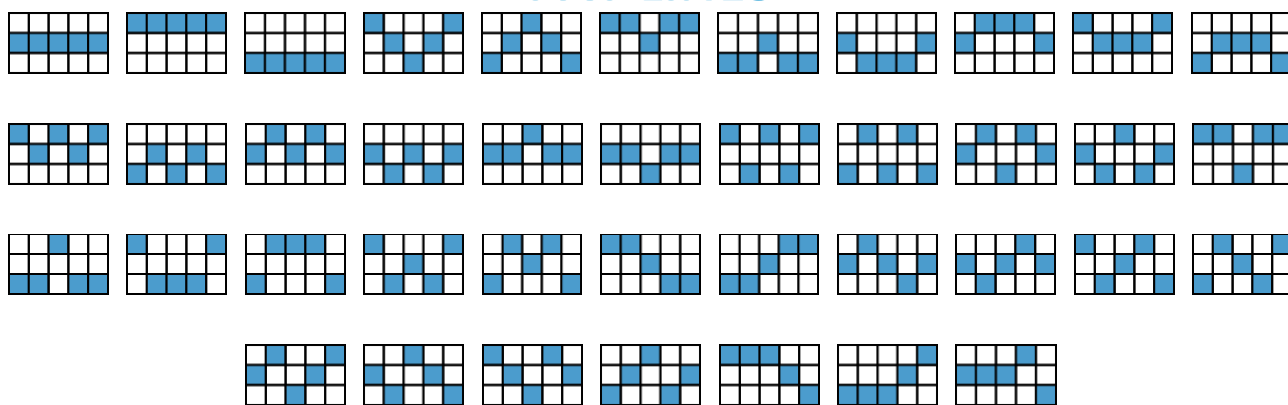
The empty symbol positions are filled as symbols tumble from above.

Afterwards, symbols are re-evaluated for new winning combinations.

Reels continue to tumble until no winning symbol combinations are created as a result of the tumbling reels.

GENERAL INFO

PAY LINES



GENERAL INFO : GENERAL RULES

Line wins must appear on played lines.

Line win symbols must appear on adjacent reels, beginning with the leftmost reel.

Only the highest win is paid on each line.

Line wins are multiplied by the bet per line.

Scatter symbols award in any position on the reels.

Only the highest win is paid for each scatter symbol combination.

Wins are shown in credits unless marked as currency.

Values displayed in the Help Screens have not been pre-multiplied, except where stated.

Wins subject to verification.

The prizes are paid in accordance with the payout table available on the game interface.

Malfunction voids all pays and plays.

GENERAL INFO : RETURN TO PLAYER

Stopping the spin animation using the spin or stop button will have no effect upon the outcome of the game.

The theoretical return to player for the game starts at 90.0% and increases up to 97.1% as additional symbols are unlocked via the Spin-crease Feature.

If the player is accessing the game on this website, the player is subject to the restrictions on play on this website for all configurable items based on operator's terms and conditions.

GENERAL INFO : METER RULES

PLAYING 000 LINES

The amount of lines that are in play

00 PER LINE

The value of each line that is in play

< BET: 0000000 >

Select the total amount that will be wagered when the spin button is pressed

**WIN:
0000000**

Total amount won for this spin

**BALANCE:
0000000**

Total balance that the player has available for wager

GENERAL INFO : RECOVERY RULES

Any game in progress will be completed automatically and the corresponding prize, if any, will be deposited into the account. In the eventuality that a choice is required that may have a bearing on the outcome of the game, the game will be completed based on the choice offered at the top left. Please note that this statement applies to games with player choices only ("Meaningful Pick Games") and may not apply to this specific game.

In any situation where the player does not consider this sufficient, please contact the gaming website's support.

GENERAL INFO : BONUS COMPLETE SCREEN

The Bonus Complete screen will not include the amount won unless the cumulative winnings exceed the total bet.

GENERAL INFO : SPEED SPIN

(if accepted in your country)

Hold down the spin button to activate Speed Spin.

Your games will play faster until you release.

GENERAL INFO : ATTRIBUTIONS

December 11, 2019 12:00 V2.0



Triple Double Da Vinci Diamonds was created by High 5 Games (H5G). For more information on H5G, go to www.high5games.com.

Triple Double Da Vinci Diamonds' trademark(s) and copyright(s) are owned or registered by H5G in the U.S. and/or other countries.

The Spin-crease trademark is owned or registered by H5G in the U.S. and/or other countries.

The Split Symbols trademark(s) and copyrights are owned and/or registered by IGT in the U.S. and/or other countries and used under license from IGT.

The Tumbling Reels trademark(s) and copyrights are owned and/or registered by IGT in the U.S. and/or other countries and used under license from IGT.

BONUSBONUS WILDBONUS FEATUREBASEBASE FEATUREPAY LINES