

SHADOW OF THE PANTHER

BONUS

FREE GAMES BONUS INITIATION


During the base game, 5 or more  appearing in any position on reels 2, 3, 4, and 5 starts Free Games Bonus.

5  awards 5 free games.

6  awards 7 free games.

7  awards 10 free games.

8  awards 15 free games.

1  substitutes for 2  symbols.

 is a scatter symbol.

 is a scatter symbol.

 and  appears only on reels 2, 3, 4, and 5.

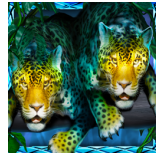
BONUS : **PAY TABLES**



5 - 300
 4 - 50
 3 - 15
 2 - 10



5 - 250
 4 - 40
 3 - 15
 2 - 8



5 - 175
 4 - 30
 3 - 12
 2 - 8



5 - 175
 4 - 30
 3 - 12
 2 - 8



5 - 10
 4 - 6
 3 - 4



5 - 10
 4 - 6
 3 - 4



5 - 10
 4 - 6
 3 - 4



5 - 8
4 - 5
3 - 3




5 - 8
4 - 5
3 - 3



5 - 8
4 - 5
3 - 3

ALL CREDIT WINS ARE SHOWN WITHOUT ANY BET MODIFIERS.

BONUS : **WILD**

	
5 -	1000
4 -	250
3 -	50
2 -	15

ALL CREDIT WINS ARE SHOWN WITHOUT ANY BET MODIFIERS.



is wild and substitutes for all symbols.

BONUS : FREE GAMES BONUS RULES

The Free Games Bonus uses different reels.

Free games automatically play on the same lines at the same bet per line as the game that initiated the Free Games Bonus.

The Free Games Bonus does not award additional free games.

The Free Games Bonus ends when 0 free games remain.

BONUS : SUPER STACKS FEATURE

The reels contain stacks of mystery symbols that transform into one of the following symbols at the start of each spin:





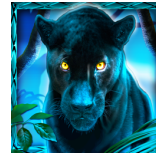
All stacked mystery symbol positions on a reel transform to the same symbol.

BASE PAY TABLES



10 -	300
9 -	150
8 -	50
7 -	30
6 -	15
5 -	12
4 -	10
3 -	8

1  substitutes
for 2  symbols.





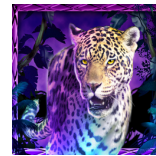
10 -	250
9 -	125
8 -	40
7 -	20
6 -	15
5 -	10
4 -	8
3 -	6

1  substitutes
for 2  symbols.





10 -	175
9 -	100
8 -	30
7 -	18
6 -	12
5 -	9
4 -	8
3 -	5

1  substitutes
for 2  symbols.



10 -	175
9 -	100
8 -	30
7 -	18
6 -	12
5 -	9
4 -	8
3 -	5

1  substitutes
for 2  symbols.



5 - 10
4 - 6
3 - 4




5 - 10
4 - 6
3 - 4




5 - 10
4 - 6
3 - 4



5 - 8
4 - 5
3 - 3




5 - 8
4 - 5
3 - 3



5 - 8
4 - 5
3 - 3

ALL CREDIT WINS ARE SHOWN WITHOUT ANY BET MODIFIERS.

BASE : **WILD**



5 - 1000
4 - 250
3 - 50
2 - 15

ALL CREDIT WINS ARE SHOWN WITHOUT ANY BET MODIFIERS.



is wild and substitutes for all symbols except



and



.

BASE : SUPER STACKS FEATURE

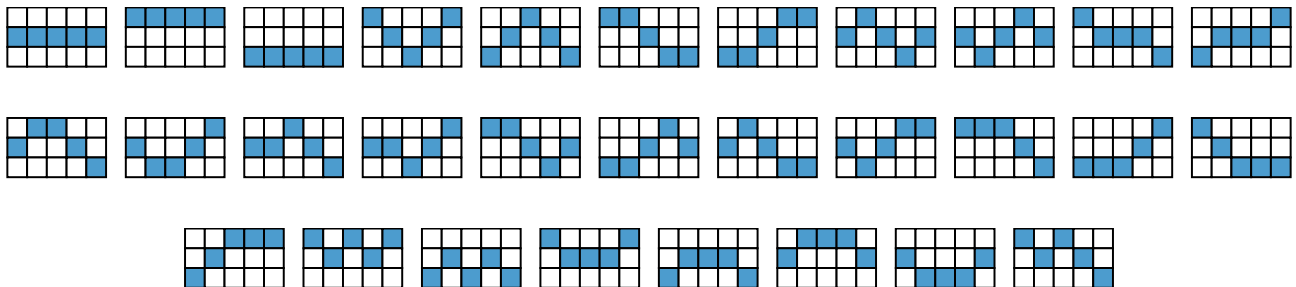
The reels contain stacks of mystery symbols that transform into one of the following symbols at the start of each spin:



All stacked mystery symbol positions on a reel transform to the same symbol.

GENERAL INFO

PAY LINES



GENERAL INFO : GENERAL RULES

Line wins must appear on played lines.

Line win symbols must appear on adjacent reels, beginning with the leftmost reel.

Only the highest win is paid on each line.

Line wins are multiplied by the bet per line.

Scatter symbols award in any position on the reels.

Wins are shown in credits unless marked as currency.

Values displayed in the Help Screens have not been pre-multiplied, except where stated.

Wins subject to verification.

The prizes are paid in accordance with the payout table available on the game interface.

Malfunction voids all pays and plays.

GENERAL INFO : **RETURN TO PLAYER**

Stopping the spin animation using the spin or stop button will have no effect upon the outcome of the game.

The theoretical return to player for the game is 96.0%.

If the player is accessing the game on this website, the player is subject to the restrictions on play on this website for all configurable items based on operator's terms and conditions.

GENERAL INFO : **METER RULES**

PLAYING 000 LINES

The amount of lines that are in play

00 PER LINE

The value of each line that is in play

< BET: 0000000 >

Select the total amount that will be wagered when the spin button is pressed

WIN: 0000000

Total amount won for this spin

BALANCE:
0000000

Total balance that the player has available for wager

GENERAL INFO : **RECOVERY RULES**

Any game in progress will be completed automatically and the corresponding prize, if any, will be deposited into the account. In the eventuality that a choice is required that may have a bearing on the outcome of the game, the game will be completed based on the choice offered at the top left.

All required player selections will be chosen from the topmost left option.

Please note that this statement applies to games with player choices only ("Meaningful Pick Games") and may not apply to this specific game.

In any situation where the player does not consider this sufficient, please contact the gaming website's support.

GENERAL INFO : **BONUS COMPLETE SCREEN**

The Bonus Complete screen will not include the amount won unless the cumulative winnings exceed the total bet.

GENERAL INFO : **SPEED SPIN**

(if accepted in your country)

Hold down the spin button to activate Speed Spin.

Your games will play faster until you release.

GENERAL INFO : **ATTRIBUTIONS**

SHADOW of the PANTHER

Shadow of the Panther was created by High 5 Games (H5G). For more information on H5G, go to www.high5games.com.

Shadow of the Panther's trademark(s) and copyrights are owned and/or registered by International Game Technology (IGT) in the U.S. and/or other countries and used under license from IGT.

The Super Stacks trademark(s) and copyrights are owned and/or registered by IGT in the U.S. and/or other countries and used under license from IGT.

The Split Symbols trademark(s) and copyrights are owned and/or registered by IGT in the U.S. and/or other countries and used under license from IGT.