

TWIN WIN

BASE PAY TABLES



10 -	2500
9 -	1000
8 -	500
7 -	300
6 -	200
5 -	100
4 -	30
3 -	10



substitutes for 2



symbols.



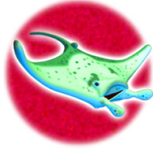
10 -	1000
9 -	800
8 -	500
7 -	300
6 -	200
5 -	100
4 -	30
3 -	10



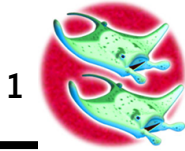
substitutes for 2



symbols.

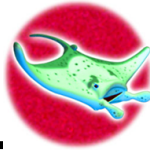


10 - 1000
9 - 800
8 - 500
7 - 300
6 - 200
5 - 100
4 - 25
3 - 10



1

substitutes for 2



symbols.



10 - 1000
9 - 800
8 - 500
7 - 300
6 - 200
5 - 100
4 - 25
3 - 10



1

substitutes for 2



symbols.



10 - 1000
9 - 800
8 - 500
7 - 200
6 - 150
5 - 100
4 - 25
3 - 10

1



substitutes for 2



symbols.

A

5 - 200
4 - 20
3 - 8

K

5 - 100
4 - 15
3 - 5

Q

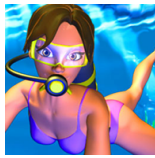
5 - 100
4 - 15
3 - 5

J

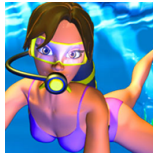
5 - 100
4 - 15
3 - 5

ALL CREDIT WINS ARE SHOWN WITHOUT ANY BET MODIFIERS.

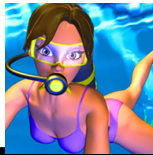
BASE : **SCATTER**



5 - 200x Total Bet
 Any 4 - 20x Total Bet
 Any 3 - 5x Total Bet



is a scatter symbol.



appears as



while animating.

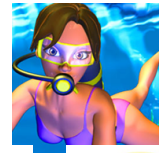
BASE : **WILD**



5 - 10000
 4 - 1000
 3 - 300

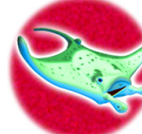


is wild and substitutes for all symbols except



1

substitutes for 2



or



symbols.

1



substitutes for 1



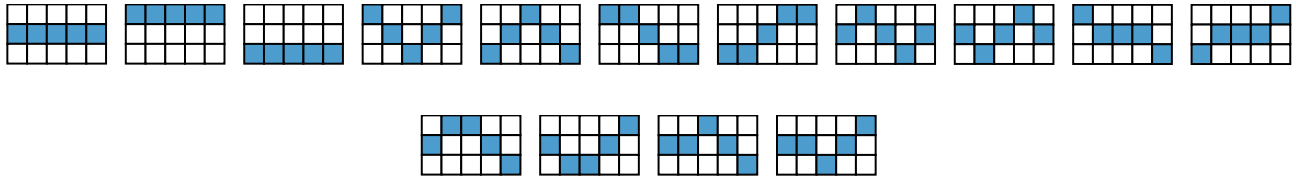
, or



symbol.

GENERAL INFO

PAY LINES



GENERAL INFO : LINE PAY RULES

Line wins must appear on played lines.

Line win symbols must appear on adjacent reels, beginning with the leftmost reel.

Only the highest win is paid on each line.

Line wins are multiplied by the bet per line.

Scatter symbols award in any position on the reels.

Only the highest win is paid for each scatter symbol combination.

Scatter wins are multiplied by the total amount bet.

Scatter wins are awarded in addition to line wins.

Wins are shown in credits unless marked as currency.

Values displayed in the Help Screens have not been pre-multiplied,
except where stated.

Wins subject to verification.

The prizes are paid in accordance with the payout table available on the game
interface.

Malfunction voids all pays and plays.

GENERAL INFO : RETURN TO PLAYER

Stopping the spin animation using the spin or stop button will have no effect upon the outcome of the game.

The theoretical return to player for the game is 96.5%.

If the player is accessing the game on this website, the player is subject to the restrictions on play on this website for all configurable items based on operator's terms and conditions.

GENERAL INFO : METER RULES

PLAYING 000 LINES

The amount of lines that are in play

00 PER LINE

The value of each line that is in play

< BET: 0000000 >

Select the total amount that will be wagered when the spin button is pressed

**WIN:
0000000**

Total amount won for this spin

**BALANCE:
0000000**

Total balance that the player has available for wager

GENERAL INFO : RECOVERY RULES

Any game in progress will be completed automatically and the corresponding prize, if any, will be deposited into the account. In the eventuality that a choice is required that may have a bearing on the outcome of the game, the game will be completed based on the choice offered at the top left.

Please note that this statement applies to games with player choices only ("Meaningful Pick Games") and may not apply to this specific game.

In any situation where the player does not consider this sufficient, please contact the gaming website's support.

GENERAL INFO : BONUS COMPLETE SCREEN

The Bonus Complete screen will not include the amount won unless the cumulative winnings exceed the total bet.

GENERAL INFO : SPEED SPIN

(if accepted in your country)

Hold down the spin button to activate Speed Spin.

Your games will play faster until you release.

GENERAL INFO : ATTRIBUTIONS

January 14, 2021 12:00 V2.0



Twin Win was created by High 5 Games (H5G). For more information on H5G, go to www.high5games.com. Twin Win trademark(s) and copyrights are owned and/or registered by International Game Technology in the U.S. and/or other countries and used under license from IGT.

The Split Symbols trademark(s) and copyrights are owned and/or registered by International Game Technology in the U.S. and/or other countries and used under license from IGT.

BASEPAY LINES